

## EBV Nuclear Antigen-1 (EBNA-1) Recombinant Protein

Catalog Number: 10-523-001

Lot Number: E0508-A1116

**Product Description:** Recombinant Epstein-Barr Virus Nuclear Antigen type 1 originated from Sf-9 cells infected with baculovirus recombinant EBNA-1 and purified by ion-exchange chromatography.

Unit Size: 200 µg

Volume: 0.897 mL

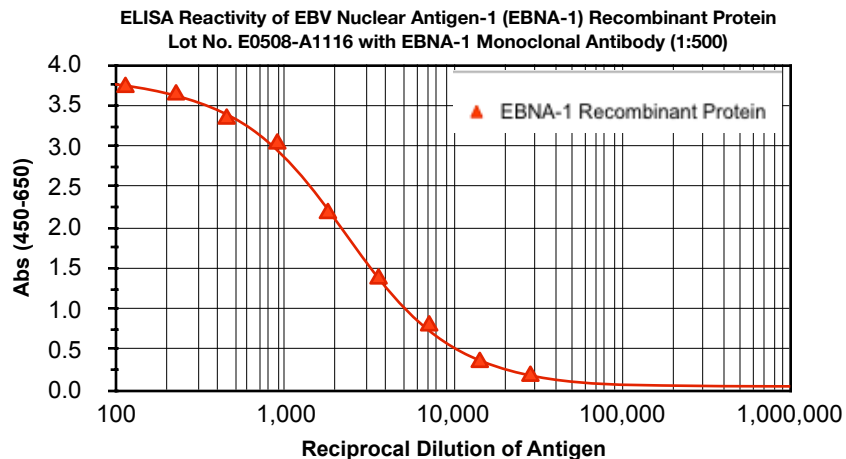
Suspending Buffer: 50 mM HEPES, 6 M Urea, 1 mM EDTA, pH 7.5

### QUALITY CONTROL DATA

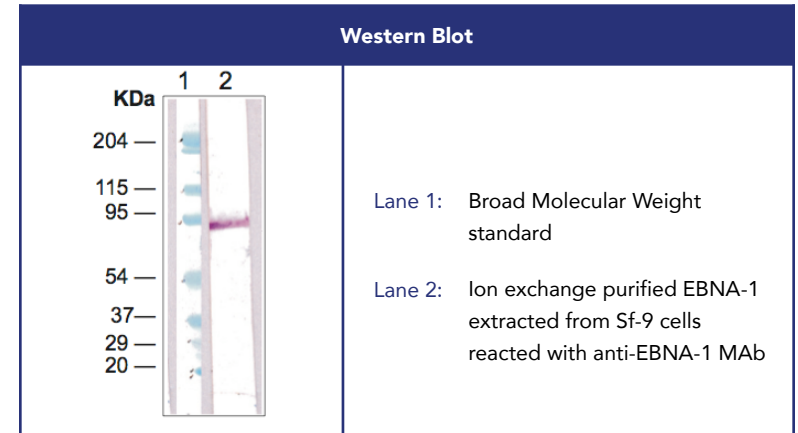
**Sterility Tests:** Bacteria, yeasts, fungi (USP-NF), and mycoplasma were not detected.

**Protein Concentration:** 223 µg/mL determined by Pierce BCA protein assay using BSA standard. Alternative methods for determining protein concentration may give different values.

**ELISA Testing:** 10,559 units\*/mL using EBNA-1 MAb  
\*A unit is defined as the reciprocal dilution of the purified antigen that gives an absorbance of 0.500 in our test system.



**Western Blot Testing:** Reactive in Western blot using purified IgG of mouse EBNA-1 MAb and showed a single band at ~88 kDa.



### PRODUCT DETAILS

**Shipping and Storage:** This product is shipped frozen on dry ice. **Store at -70°C upon receipt.** Avoid multiple freeze-thaw cycles as product degradation may result.

**Recommendations:** For ELISA and Western blot, the dilution of the antigen is to be determined by the end user depending on the assay system.

**Safe Handling Recommendation:** This biological preparation should be handled in accordance with biosafety guidelines defined in the BMBL, NIH-CDC HHS Publication No. (CDC) 21-1112.

**References:**

- Cutler, C., Rituximab for steroid-refractory chronic graft-versus-host-disease. *Blood* 2006; 108: 756-762.
- Miklos, D.B., et al. Antibody responses to H-Y minor histocompatibility antigens correlate with chronic graft-versus-host-disease and disease remission. *Blood* 2005; 105: 2973-2978.
- Sarantopoulos, S., et al. Recovery of B-cell homeostasis after rituximab in chronic graft-versus-host disease. *Blood* 2011; 117: 2275-2283.

This product is for research use only.  
Not for use in diagnostic procedures.

*Authenticity*

Quick. Easy. **Technical support.**

[www.abionline.com/contact-us/](http://www.abionline.com/contact-us/)



**CERTIFICATE OF ANALYSIS**